

Leica Geosystems created the smallest, most easy-to-use imaging laser scanner in the world: the BLK360. At the same time, Autodesk created Autodesk ReCap Pro for mobile to remotely control all aspects of the data collection process. Reality? Consider it captured.



# INTRODUCING LEICA BLK360 & AUTODESK® RECAP™ PRO

Reality capture for everyone



# UNDER THE HOOD

BLK360 & Autodesk ReCap Pro, plus the new ReCap Mobile Controller App

Get the bundle that makes capturing reality as easy as clicking a button

## BLK360 Imaging Laser Scanner

- Smallest and lightest laser scanning system in the world
- Weight: 2.2 lbs, Size: 6.5" tall x 4" in diameter
- Less than 3 minutes for a full 360° reality capture
- 3-D image point cloud available in real time
- Selectable resolution settings
- Calibrated full spherical image, HDR, LED flash support

## Autodesk ReCap Pro Software

- Gain complete access to Autodesk ReCap Pro for desktop, web, and mobile\*
- Control all aspects of the reality capture process remotely on Autodesk ReCap Pro for iPad
- Automatically register and visualize scan data in the field
- Mark up, tag, and collaborate on scans while on the job site
- Reduce rework requests and share reality data remotely
- Seamlessly transfer data to Autodesk design software

\*Mobile available in spring 2017

# A NEW, SIMPLE WAY TO CAPTURE REALITY

BLK360 & Autodesk ReCap Pro give you

## Speed

On-the-fly image and point cloud processing in the field

## Portability

Small, lightweight scanner fits in a messenger bag, giving you the flexibility to scan wherever, whenever

## Ease of Use

Push-button scanning that's automatically stitched and registered in the mobile version of ReCap Pro

## Connectivity

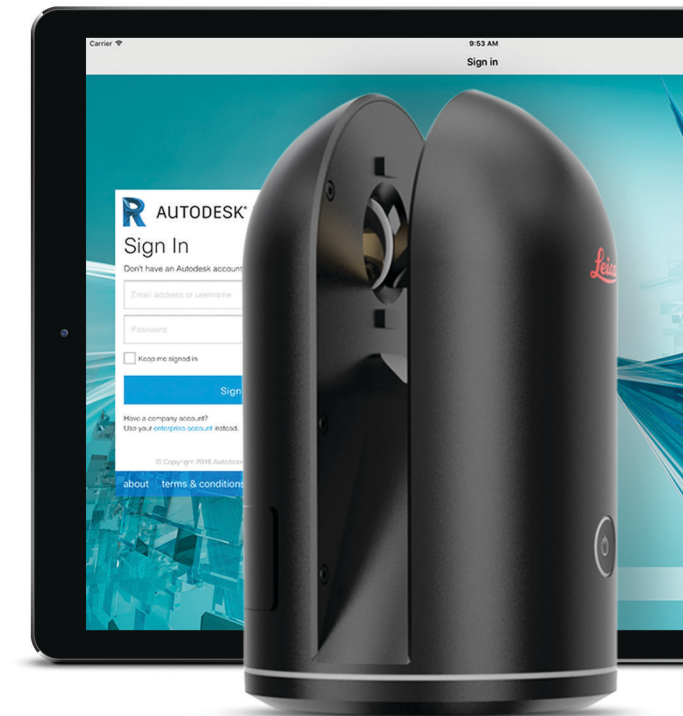
Connect to cloud and desktop for better collaboration and virtualization

## Simplified Data Collection

Two-in-one 360° image documentation and laser scan data

## Interoperability

Data are ready to use with Autodesk's integrated design solutions



**Leica**  
Geosystems

**AUTODESK**